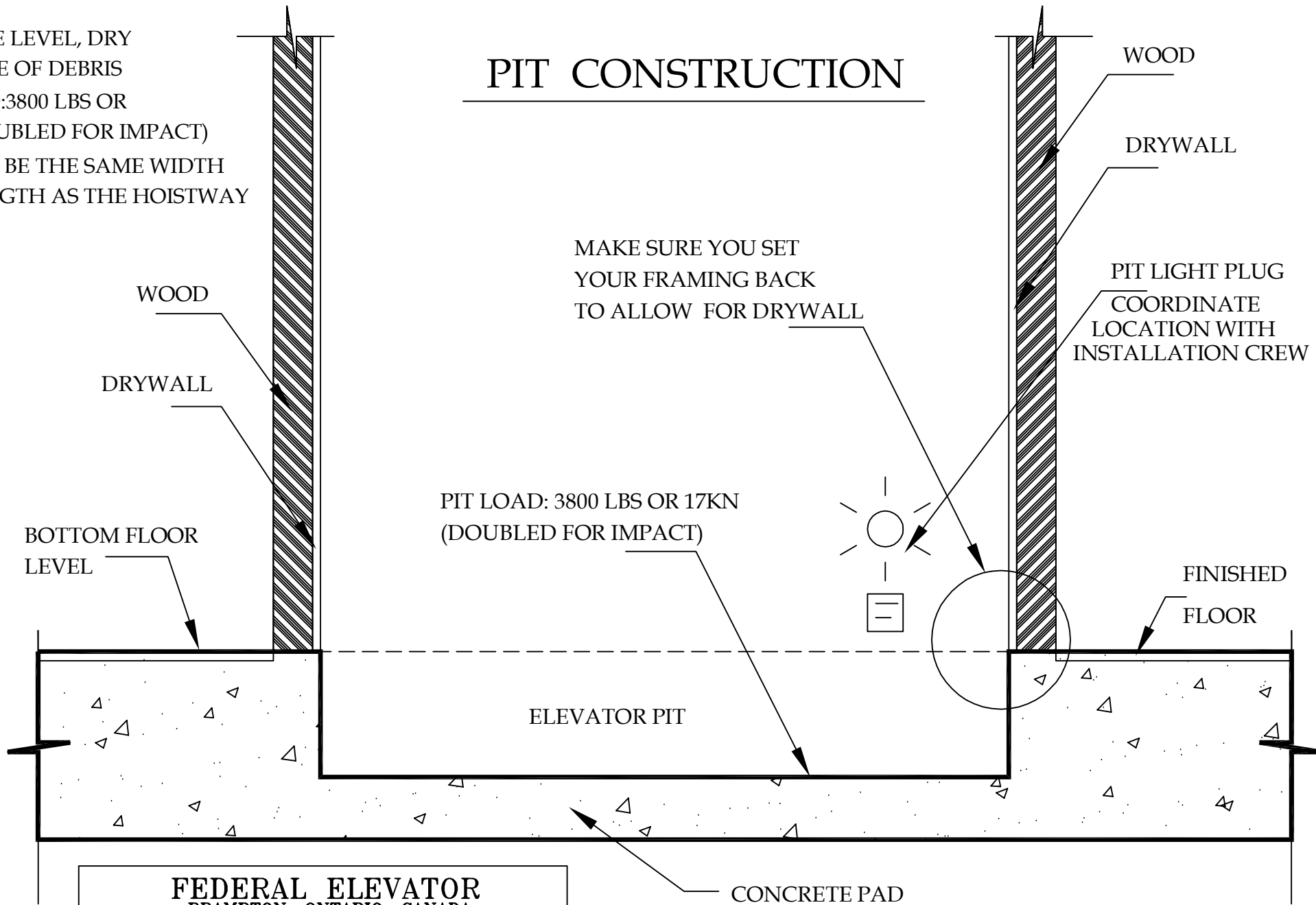


LULA, CARELIFT, COMMERCIAL

PIT CONSTRUCTION

NOTES:

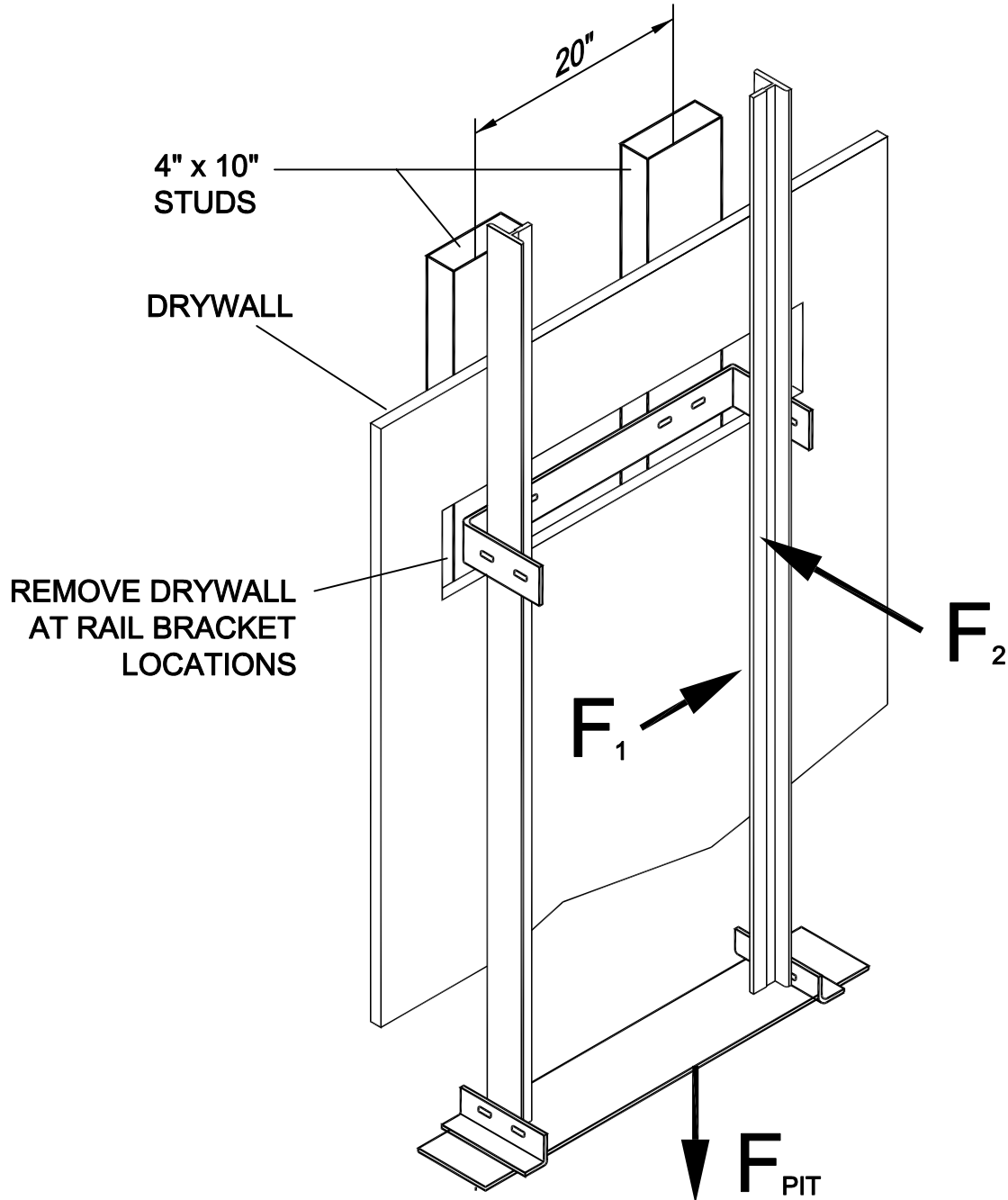
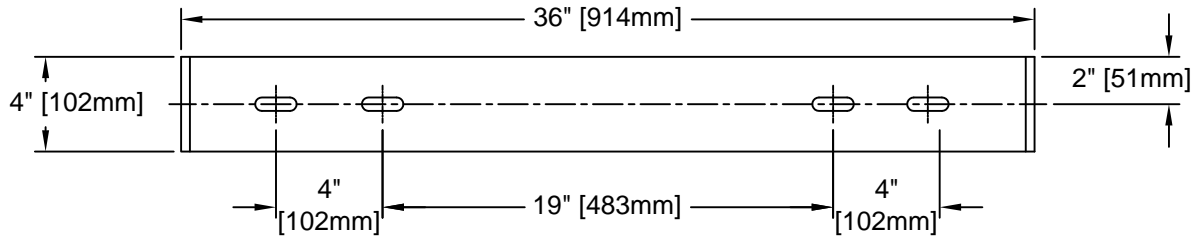
1. PIT TO BE LEVEL, DRY AND FREE OF DEBRIS
2. PIT LOAD: 3800 LBS OR 17KN (DOUBLED FOR IMPACT)
3. PIT MUST BE THE SAME WIDTH AND LENGTH AS THE HOISTWAY



FEDERAL ELEVATOR
BRAMPTON, ONTARIO, CANADA
WEBSITE: www.federalevators.com
Tel: (905) 458-4015 Fax: (905) 458-0680

CONCRETE PAD

30" D.B.G. RAIL BRACKET



FEDERAL ELEVATOR
 43 WENTWORTH COURT
 BRAMPTON, ONTARIO, CANADA L6T 5L4
 TEL: (905) 458-4015
 1 (888) 785-5438 (LIFT)
 FAX: (905) 458-0680
 www.federalelevator.com
 E-MAIL: sales@federalelevator.com

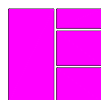
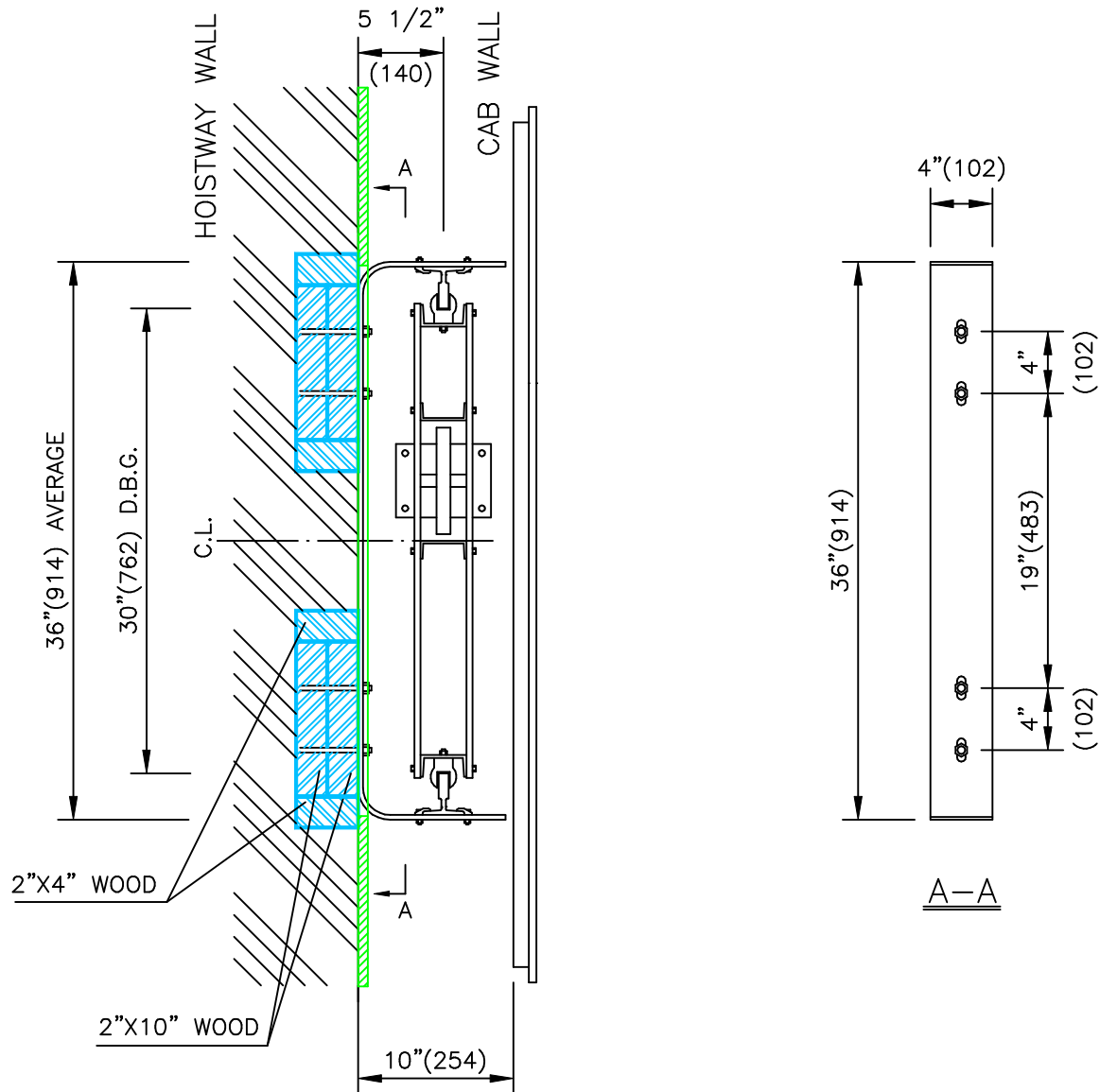
LOAD	DESCRIPTION	LB _f [KN]
F_{PIT}	Load Imposed on Pit Floor (Including Impact)	3825 [17.0]
F_1	Force on Rail	225 [1.0]
F_2	Force on Rail	675 [3.0]

RAIL BRACKET DETAIL ROPED

DIMENSIONS SHOWN BELOW ARE CORRECT FOR INSTALLATION PURPOSES.

CRITICAL DIMENSIONS ARE:

- 1) WALL TO CENTRE OF CYL. = 5 1/2" (140)
- 2) WALL TO CENTRE OF RAIL = 5 1/2" (140)
- 3) WALL TO CAB = 10" (254)



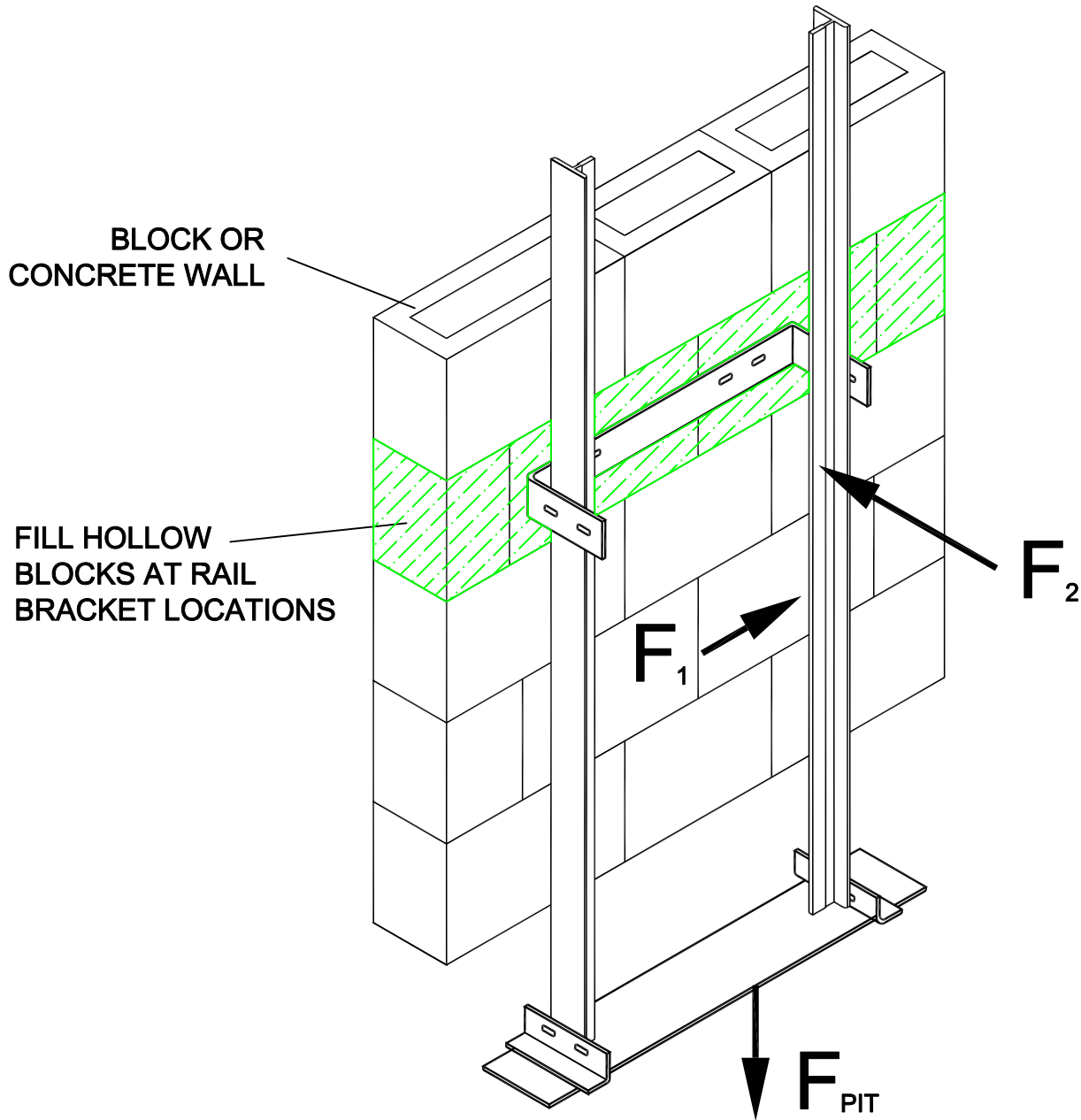
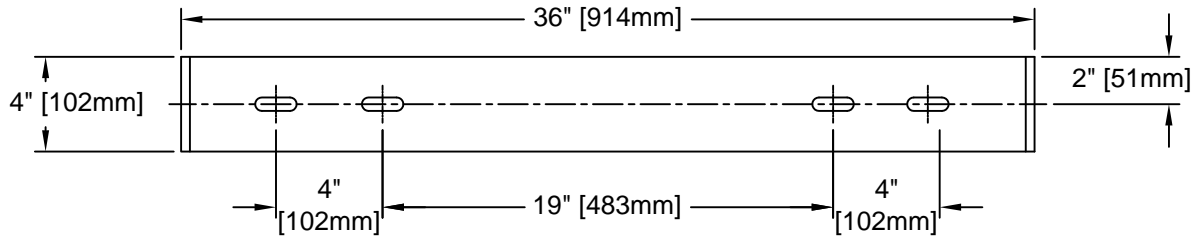
**FEDERAL
ELEVATOR**

FEDERAL ELEVATOR SYSTEMS INC.
BRAMPTON, ONTARIO, CANADA

WEBSITE: www.federalelevator.com

PHONE: (905) 458-4015 FAX: (905) 458-0680

30" D.B.G. RAIL BRACKET



**FEDERAL
ELEVATOR**

43 WENTWORTH COURT
BRAMPTON, ONTARIO, CANADA L6T 5L4
TEL: (905) 458-4015
1 (888) 785-5438 (LIFT)
FAX: (905) 458-0680
www.federalelevator.com
E-MAIL: sales@federalelevator.com

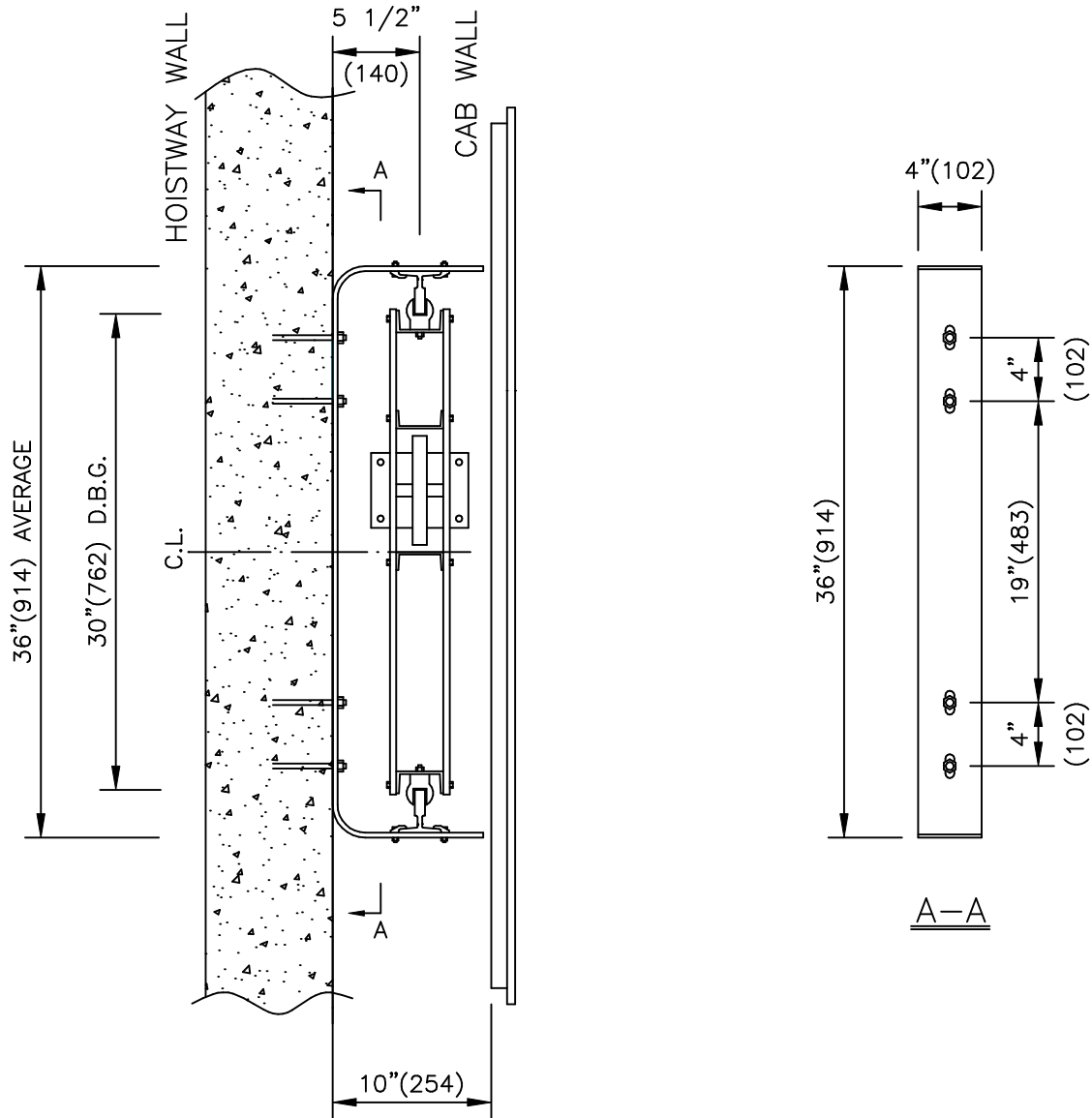
LOAD	DESCRIPTION	LB _f [KN]
F_{PIT}	Load Imposed on Pit Floor (Including Impact)	3825 [17.0]
F_1	Force on Rail	225 [1.0]
F_2	Force on Rail	675 [3.0]

RAIL BRACKET DETAIL ROPED

DIMENSIONS SHOWN BELOW ARE CORRECT FOR INSTALLATION PURPOSES.

CRITICAL DIMENSIONS ARE:

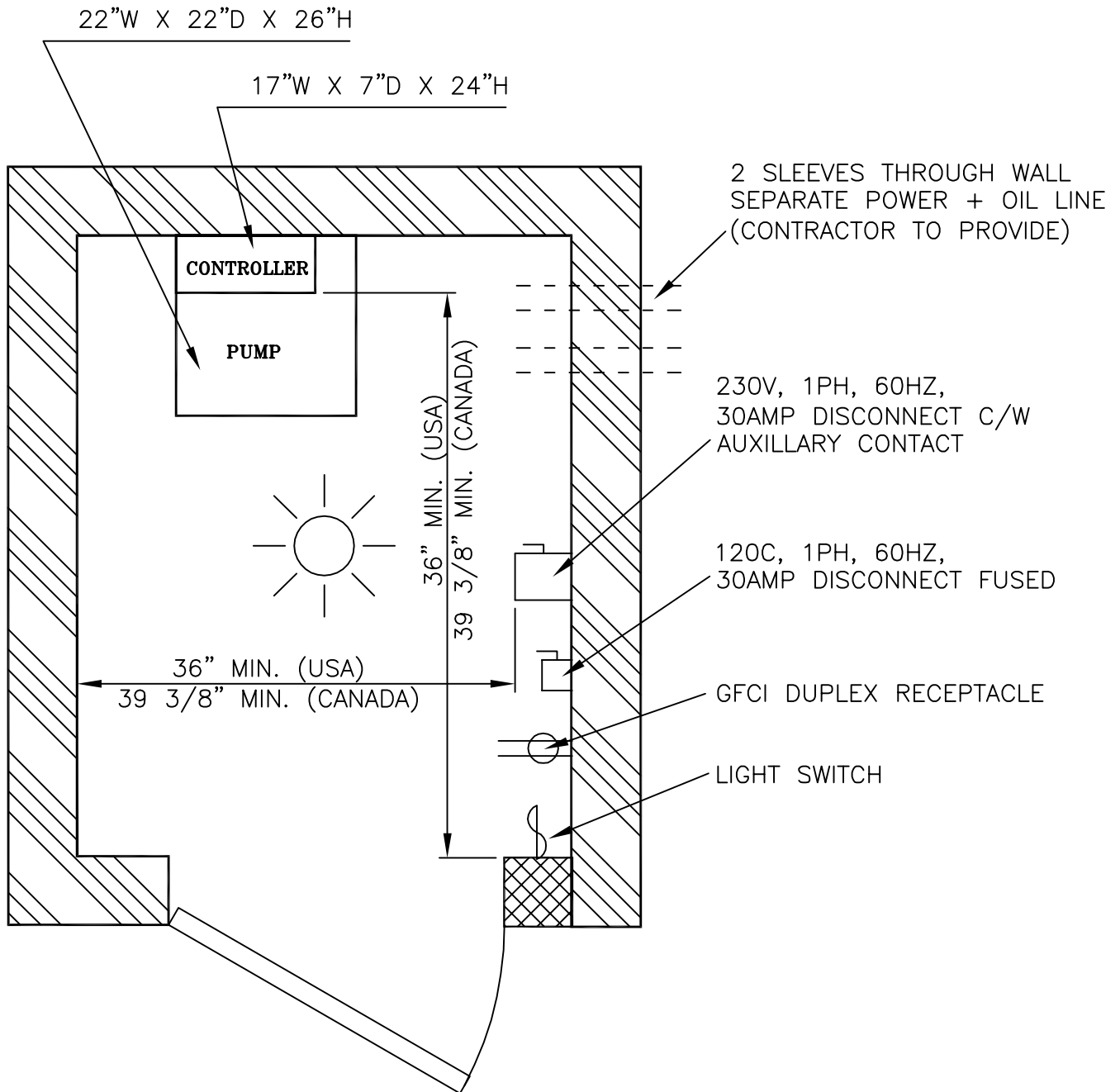
- 1) WALL TO CENTRE OF CYL. = 5 1/2" (140)
- 2) WALL TO CENTRE OF RAIL = 5 1/2" (140)
- 3) WALL TO CAB = 10" (254)



FEDERAL ELEVATOR SYSTEMS INC.
BRAMPTON, ONTARIO, CANADA

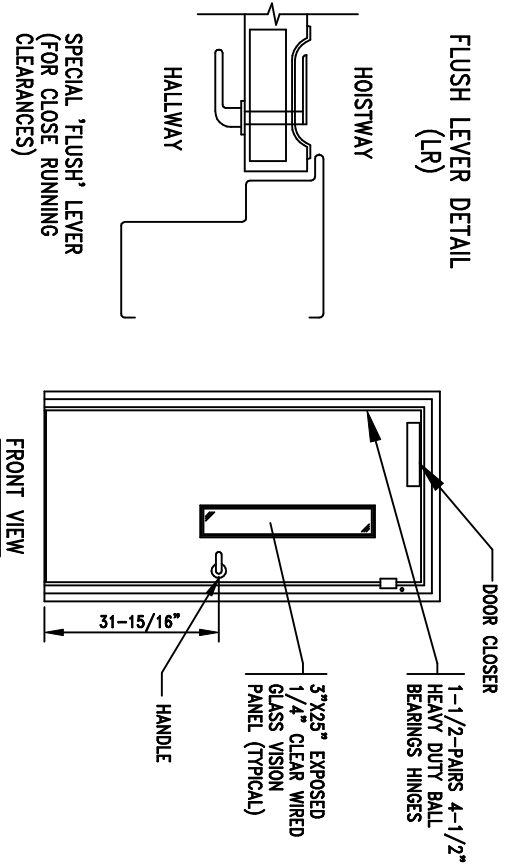
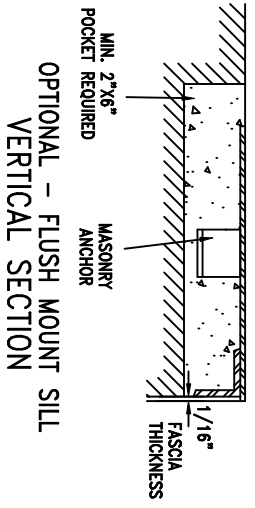
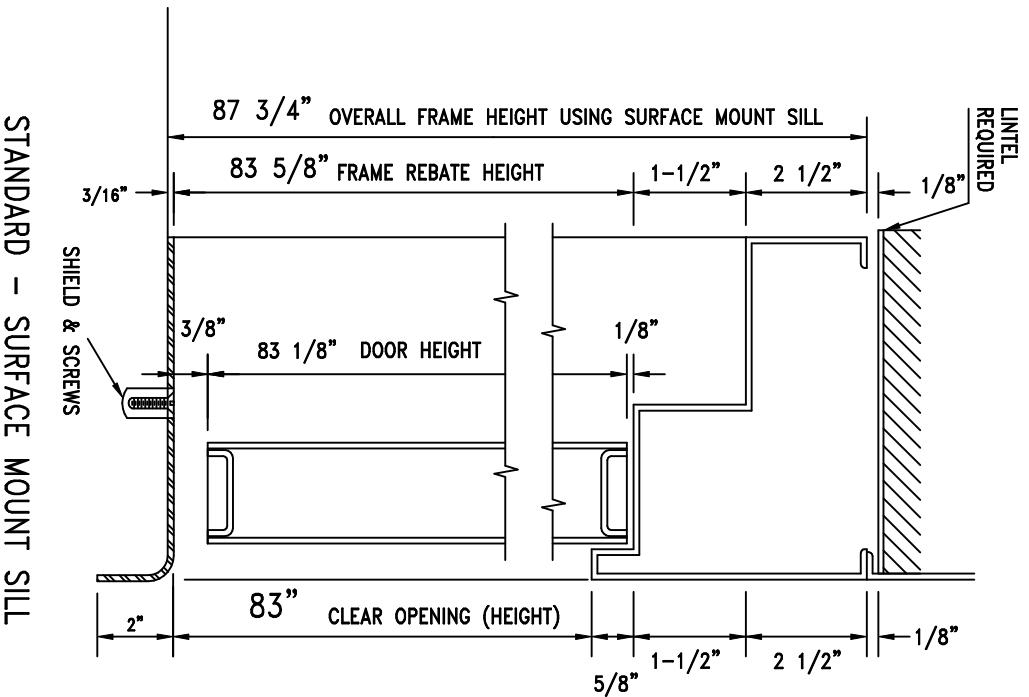
WEBSITE: www.federalelevator.com

PHONE: (905) 458-4015 FAX: (905) 458-0680



FEDERAL
ELEVATOR
Advanced Elevator Systems

43 Wentworth Court
Brampton, Ontario
Canada, L6T 5L4
Tel.: (905) 458-4015
1 (888) 785-5438 (LIFT)
Fax: (905) 458-0680
www.FederalElevator.com



IMPORTANT INFORMATION NEEDED FROM INSTALLING CONTRACTOR:

- Q. WHAT IS MAXIMUM ROUGH OPENING AVAILABLE? 44 1/2" WIDE x _____ HIGH
 (NOTE: PROVIDE AS MUCH ROUGH OPENING AS POSSIBLE FOR GOOD FASTENING AND SATISFACTORY INSTALLATION)
- Q. WHEN ENTRANCE IS SET IN PLACE, DISTANCE FROM HATCH SIDE OF CLOSED DOOR TO CAR SILL (INCHES)? _____ N/A
- Q. (A) WILL FRAMES BE ATTACHED TO BUILDING STRUCTURE BY DRYWALL, BRICK/CONC. BLOCK? N/A
 IF SO - WALL THICKNESS _____ N/A
 (B) WELDED TO STEEL CHANNELS? N/A
 IF SO - SIZE OF CHANNELS _____
 (C) OTHER METHOD (SPECIFY) _____
- Q. FINISH: (A) STANDARD SATIN COAT GAL.
 (B) OTHER (SPECIFY) _____
- Q. SPECIFY VOLTAGE AVAILABLE FOR ELECTRIC STRIKE COIL
 24 VAC (STANDARD) 24 VDC 12 VDC

STANDARD - SURFACE MOUNT SILL

OPTIONAL - FLUSH MOUNT SILL VERTICAL SECTION

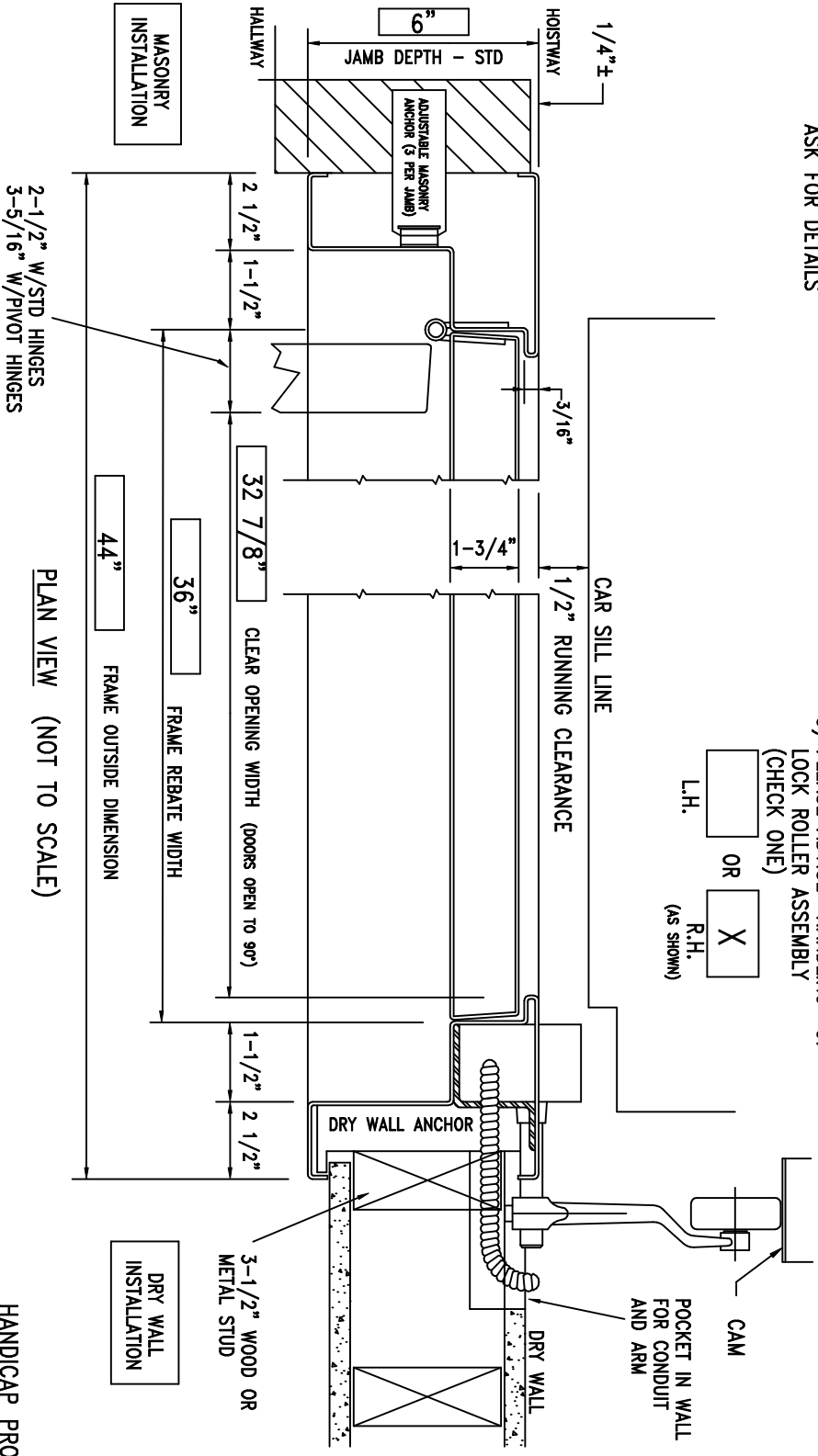
REV	DESCRIPTION	DATE	BY	DRN	ID	DATE	SCALE	N/A	OF	2	DWG NO.	REV.	
					FEDERAL ELEVATOR BRAMPTON, ONTARIO, CANADA Tel:(905)458-4015 Fax:(905)458-0680			NAME SINGLE SWING DOOR UNIT		SHEET 2 OF 2 SAMPLE DRAWING-84"		H-023B-84	0

FRAME				DOORS					
QUANTITY	CONST.	WIDTH	HEIGHT	JAMB DEPTH	QUANTITY	CONST.	WIDTH	HEIGHT	THICKNESS
TBD	16 GA.	44"	83 3/4"	6"	TBD	18 GA.	35 3/4"	79 1/8"	1 3/4"

Note: Door and frames shall be constructed of best quality zinc wipe-coated steel of gauges specified.
 OPTIONAL: ELECTRIC STRIKE IN LIEU OF INTERLOCK - ASK FOR DETAILS

- NOTES:
- 1) ASSEMBLY SHOWN IS RIGHT HAND MOUNTED EXCEPT INTERLOCK
 - 2) UNITS SHIPPED WITH ALL HARDWARE
 - 3) PLEASE ADVISE "HANDLING" OF LOCK ROLLER ASSEMBLY (CHECK ONE)

L.H. OR R.H. (AS SHOWN)



HANDICAP PROFILE
 SINGLE SWING DOOR UNIT

REV		DESCRIPTION		DATE	BY	DRN	ID	DATE	SCALE	N/A	OF	2	NAME	SINGLE SWING DOOR UNIT	SHEET	1	DWG NO.	H-023A	REV.	0
														FEDERAL ELEVATOR		BRAMPTON, ONTARIO, CANADA				
														Tel:(905)458-4015		Fax:(905)458-0680				
														DATE		02/18/2000				